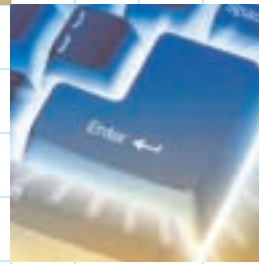


4022/4022sp
4027/4027sp

> DIGITAL IMAGING SYSTEMS

Total
document
solutions



Savin 4022/4022sp
4027/4027sp



savin®

Savin 4022/4022sp/4027/4027sp

Optional 50-Sheet Automatic Reversing Document Feeder

Optional 500-Sheet Finisher

Standard Duplex Unit

Standard 100-Sheet Bypass Tray

Standard 2 x 500-Sheet Paper Trays

Optional 2 x 500-Sheet Paper Bank

Efficient document management is key to productivity.

Built for today's fast-paced company or workgroup, the multi-functional Savin 4022/4027 Series adapts to your existing document management requirements by providing copying, network printing and scanning right out of the box. Powered with fast 22/27 page-per-minute engines, these advanced digital imaging systems not only simplify document creation and production, but enhance distribution of hardcopy and electronic files by letting users move effortlessly between tasks.

Should your current needs only require hardcopy imaging in a walk-up environment, the Savin 4022/4027 are versatile and productive solutions. As your business grows, you can leverage your investment by easily and affordably adding scanning/printing and faxing options.

No matter how the Savin 4022/4027 Series is configured, you'll benefit from superior performance plus top-notch image quality, all in one compact solution.

Work Easily

The exceptionally large, intuitive LCD Touch Panel makes the systems extremely easy to operate with clear, simple-to-understand screens guiding users through tasks.

Work Fast

The 4022/4027 Series is warmed up and ready to perform in a super-fast 4.9 seconds. Equipped with revolutionary Quick Start Up (QSU) Technology, these systems require less than 10 seconds to come back from Sleep Mode.

Work Productively

State-of-the-art Savin digital technology heightens copying productivity with time and cost saving opportunities:

- Conveniently scan lengthy documents once into memory and output multiple sets at 22 (4022) or 27 (4027) ppm.
- Crisp 600 dpi resolution.

- Customize documents via flexible image manipulation and editing, from X/Y Zoom for accurate image resizing to Combine Originals, which reduces filing space by placing multiple originals on a single sheet.
- Create professional-looking documents with Preset, Page Number and Date Stamping.
- Images are automatically rotated should the orientation of hardcopy originals, print jobs or fax receptions be different than that of the loaded paper, assuring precise output.

Stop At Nothing

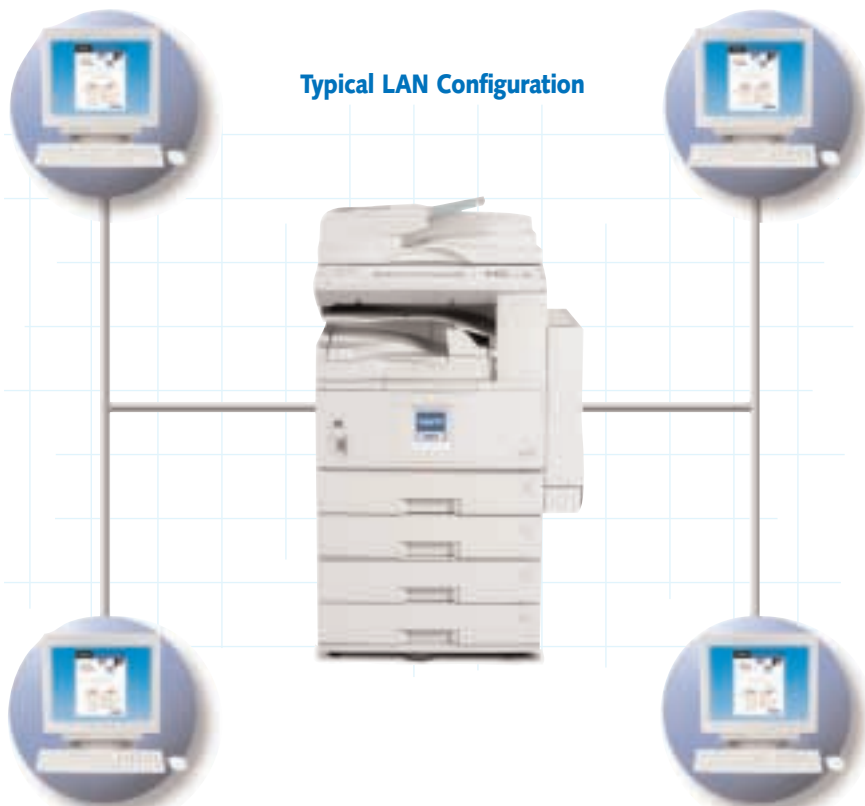
You'll enjoy virtually uninterrupted lengthy job runs with the Savin 4022/4027 Series. An optional 50-sheet Reversing Automatic Document Feeder, which handles up to 11" x 17", is at your disposal. Plus, the 4022/4027 Series is capable of holding up to 3,100 sheets of paper from multiple sources.

Seamless Document Management

Windows
98/Me/2000/XP/2003

Windows
NT4.0

Typical LAN Configuration



UNIX (Sun Solaris/
HP-UX/Linux/AIX)

Macintosh
Classic/OS X

Finish In Style

The 4022/4027 Series has ready-to-work finishing options that always produce professional-quality documents. Choose from a 500-sheet Finisher with one-position stapling or a 1,000-sheet version with multiple staple positions; select the Shift/Sort Tray and sort document sets on paper up to 11" x 17"; or use the standard electronic rotate/sorting to cut the expense of a mechanical sorter.

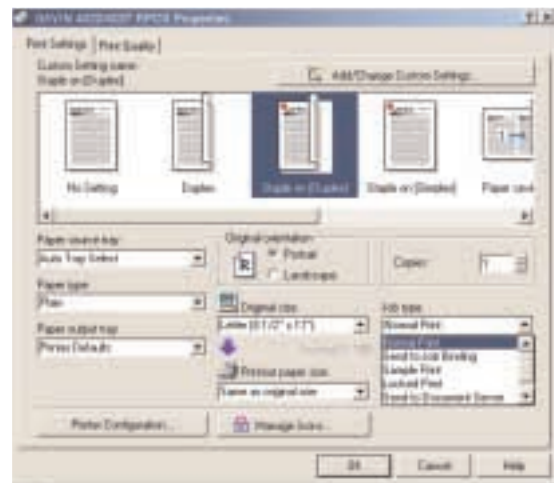
Ultimate Document Management Control Is Yours

The Document Server provides seemingly endless ways to manage your hardcopy and electronic files. Scan Once, Print Many technology enables swift scanning of documents directly into the Document Server.

Once you store all your documents, whether hardcopy, print jobs, scanned

images, fax or LAN-Fax transmissions in the Document Server, you can:

- Access and manage them either right from the 4022/4027 Series' control panel or from client workstations.
- Find and/or prioritize documents by such attributes as File Name, Scan Date or User ID.
- Combine documents without having to rescan with the convenient merge capability.
- Keep confidential print jobs secure with a personal user code that must be input at the Control Panel.
- From the Document Server, data can also be reprinted, re-faxed or digitally re-distributed whenever and as often as necessary by any network-connected user. Output can also be professionally finished as desired.



Refined Print Command Stream™ (RPCS) – a sophisticated Comprehensive Driver Interface, provides “one click” access to all output and finishing selections via clear graphic icons.

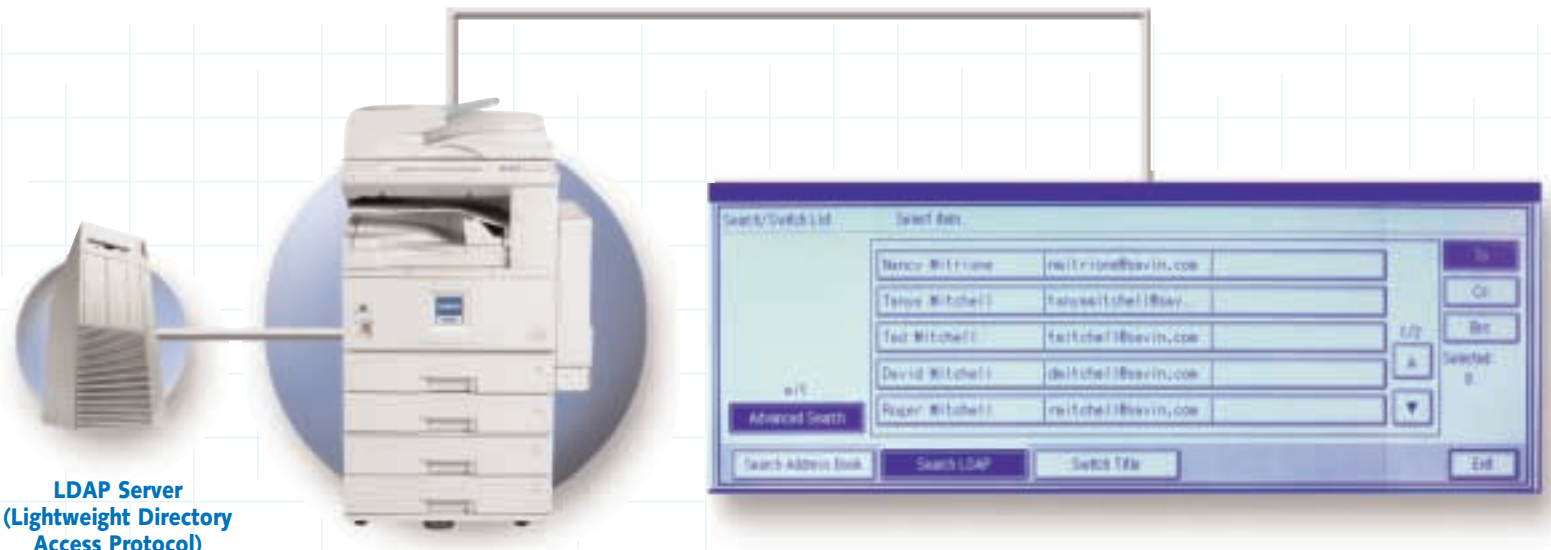
Increase System Performance & Workgroup Productivity...

Effortless Printing Connectivity

The Savin 4022sp/4027sp instantly arm you with a high-performing 22/27 ppm, 600 dpi printing solution, plus:

- Connect with your LAN via a fast Ethernet interface for instant compatibility with today's most popular computing platforms, i.e., Windows®, UNIX® and Macintosh®.
- Support your specialized connectivity needs with these available interfaces: optional 802.11b wireless, USB, Bluetooth and IEEE 1394.
- Automatically provide stapled and duplexed output at full system speed.
- Assure PC and Macintosh® compatibility with standard PCL 5e/6 and optional PostScript® 3.
- Deliver speedy throughput and ultra-fast processing of intricate graphics files with our innovative next generation print driver, Refined Print Command Stream™ (RPCS).
- Provide readily available plug-in modules for most popular Enterprise Management applications like Tivoli NetView®, CA Unicenter® and HP OpenView®.

From Imaging To Output.



LDAP Server
(Lightweight Directory Access Protocol)

Savin 4022sp/4027sp
Digital Imaging System

LDAP support from the Control Panel lets you plug into your company's global E-mail address book.

Embedded Network Scanning

Network scanning is always at your fingertips with the Savin 4022sp/4027sp...

Besides their traditional paper-based scanning capability, the 4022sp/4027sp boast other versatile scanning features to meet today's business needs. Serverless scanning, which requires no special software utility or delivery server, means no added computer costs but lots of efficiency:

- Via embedded Scan to E-mail, you can seamlessly scan, capture and deliver documents directly to an e-mail address.
- With Scan to Folder, you can scan and distribute documents via SMB/FTP protocols using your existing network infrastructure to securely deliver files of up to 2 GBs directly to a shared folder or FTP server.

All The Fax You Can Imagine

When it comes to fax communications, the 4022/4027 Series' convenient fax and LAN-Fax options combine advanced technology with great cost efficiency

and ease of use. Whether you fax traditionally via phone line, or add an extra G3 line to minimize fax traffic with separate lines for transmitting and receiving, the 4022/4027 Series is a real asset for your busy work environment:

- Receive incoming faxes at a fast 22 or 27 ppm.
- Automatically send/receive two-sided documents, and those up to 11" x 17" in size.
- Bound originals can be transmitted without creating single-sided sheets.

The Savin 4022/4027 Series also takes paperless, serverless fax productivity to new heights...

Internet Faxing

A T.37-compliant Internet Fax function enables you to send hardcopy documents to recipients in hardcopy form or as a TIFF-F E-mail attachment, eliminating all long distance or international costs. Plus, you can perform mixed fax broadcasts to recipients with e-mail addresses and fax numbers in one transmission.

Outbound LAN-Fax

- Avoid legwork and conveniently LAN-Fax directly from your PC, and deliver hardcopy faxes to the recipient's facsimile machine.
- Customize LAN-Fax cover pages with the company logo or slogan using the Cover Sheet Editor.

Inbound LAN-Fax

- Automatically store incoming faxes into the system's hard drive for easy viewing with Web Image Monitor.
- Get E-mail notification of an incoming fax, then go to the hard drive to view, download or delete the faxed message.
- Fax forwarding to E-mail assures automatic routing, ideal for those who travel.
- Automatically forward all faxes via E-mail to an administrator/fax operator, who can distribute them to appropriate parties.



The 50-Sheet ARDF automatically processes a variety of paper types and sizes – including original sets containing mixed sizes.



Add the optional 2,000-sheet Large Capacity Tray and increase your paper supply to a total of 3,100 sheets from four sources.



Print Envelopes and quickly change paper sizes with easy-to-use paper guides.



The optional 1,000-Sheet Finisher offers offset stacking and 50-sheet three-position stapling.

Incoming faxes are automatically saved to the 4022/4027 Series' HDD. The fax documents can then be viewed with Web Image Monitor.



Manage It All, From Anywhere

Once you've stored scanned, faxed, copied or printed jobs in the Document Server's massive memory, you can manage, search for or retrieve any of them right from the control panel, or by launching Savin's web-based utility, Web Image Monitor.

Now you can see and do it all from one location:

- Monitor system status and job log.
- View available paper and toner supply.
- Access and handle documents stored in Document Server.
- Program fax numbers, E-mail addresses, file shares and FTP servers from your computer.
- Establish user codes and security levels.

Committed To The Environment

Rest assured that you're conserving energy as well as expense with sophisticated energy-conscious features, including:

- Quick Start-Up (QSU) technology.
- Energy Saver Mode – as low as 6 watts.
- Ultra-fast Duplex and Combine modes.
- Internal Toner Recycling system.
- Low operation noise level.
- Minimal ozone emissions.

The Savin 4022/4027 Series empowers your office with affordable yet advanced digital technology, and provides all the productivity building blocks your growing business will ever need.

For more information contact your authorized Savin dealer.



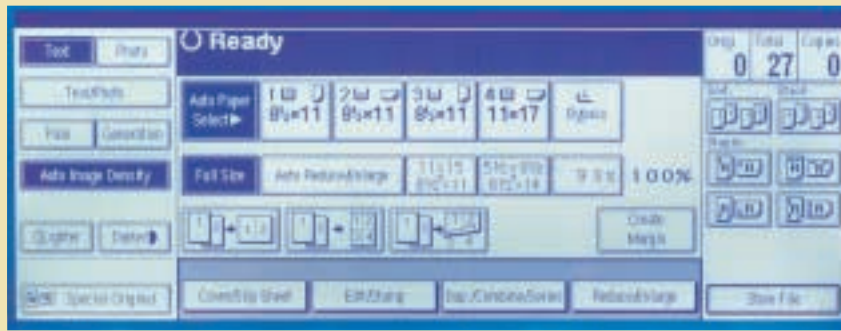
Savin

4022

4022sp

4027

4027sp



CONFIGURATION MODELS

Savin 4022/Savin 4027
Standard 2 x 500 Paper Trays, Bypass, Interchange, Duplex and 64MB RAM

Savin 4022sp/Savin 4027sp
Standard 2 x 500 Paper Trays, Bypass, Interchange, Duplex, Scanner/Printer DIMM, 10/100BaseTX NIC, 192 MB RAM, 20 GB HDD

COPIER & GENERAL SPECIFICATIONS

Configuration	Digital Copier
Copy Process	Dry electrostatic transfer
Copy Resolution	600 dpi
Gray Scale	256 levels
Standard/Maximum Memory Capacity	Standard 64 MB RAM/192 MB RAM, 20 GB HDD
Continuous Copy Speed	22/27 cpm - letter size
Copy Size	Maximum: 11" x 17"; Minimum: 5.5" x 8.5"
First Copy	4.9 seconds (internal output tray)
Maximum Original Size	11" x 17"
Minimum Original Size	5.5" x 8.5"
Warm-up Time	15 seconds
Multiple Copying	Up to 99
Auto Duplex	Standard Unlimited
Standard Paper Capacity	500 x 2 + 100-Sheet Bypass
Total Paper Capacity	3,100 sheets
Standard Output Capacity	500 sheets (internal tray)
Zoom Range	25% - 400% in 1% steps
Enlargement	121%, 129%, 155%, 200%, 400%
Reduction	93%, 85%, 78%, 73%, 65%, 50%, 25%
Copy Paper Weight	16 - 28 lb. (Tray 1, Duplex & LCT) 14 - 42 lb. (Tray 2, Bypass)
Dimensions (WxDxH)	26" x 24" x 28"
Weight	188 lbs.
Power Source	120V, 60Hz, 15 Amps
Standard Features	Auto Magnification, Auto Paper Select, Auto Tray Switch, Center/Border Erase, Combine Mode, Cover Insertion, Date Stamp, Directional Magnification, 100% Duplex Productivity, Electronic/Rotate Sorting, 10 Job Programs, Negative/Positive, OHP Slip Sheet, Page Number Stamp, Pre-Set Stamps (English), Paper Designate, Series Copy, Touch Screen Control Panel, 100 User Codes (optional 500 max.)
Features with HDD	Background Numbering, Booklet/Magazine Copy, Document Server, User Stamps

SCANNER SPECIFICATIONS (Standard Features for 4022sp/4027sp)

Scanning Speed	51 IPM – Embedded (200 dpi)
Twain Speed	36 IPM – Twain (200 dpi)
Resolution	100/200/300/400/600 dpi
Memory	Shared with Copier
Standard Features	Embedded Scan to E-Mail, Scan to Folder (SMB & FTP), Scan to In-Tray, Duplex Scanning (with optional ARDF), Halftone Scanning, LDAP with SMTP Authentication and POP before SMTP Authentication
Interface	10/100BaseTX (standard) IEEE 1394 and 802.11b Wireless (optional)
Protocol	TCP/IP, POP, LDAP, SMB, SMTP, FTP
NOS	Windows 95/98/NT/2000/Me/XP/2003

PRINTER SPECIFICATIONS (Standard Features for 4022sp/4027sp)

Print Speed	22/27 PPM
Language	PCL5e, PCL6, RPCS (standard) Adobe PostScript Level 3 (optional)
Resolution	600 dpi/300 dpi (PCL5e); 600 dpi (PCL6); 600 dpi/200 dpi (RPCS); 600 dpi/300 dpi (PS Level 3)
Memory Capacity	Shared with copier
CPU	RM5261A, 400 MHz
Network Protocol	TCP/IP, IPX/SPX, NetBEUI, SMB, AppleTalk
Interface	10/100 BaseTX, Parallel
Drivers for PCL, PS, RPCS	Windows 95/98/NT 4.0/2000/Me/XP/2003, Macintosh 8.6 - 9.2, 10.1
PCL Fonts	35 Intellifonts, 10 TrueType Fonts, 1 Bitmap Font
PS Fonts	136 PostScript Fonts (optional)
Utility Management	Web SmartDeviceMonitor, Web Image Monitor, DeskTopBinder V2 Lite
Standard Features	Form Overlay, Watermarks, Secure Print/ Locked Print, Sample Print, Spool Printing
Printer Options	IEEE 1394 Interface, USB 2.0, 802.11b Wireless, Bluetooth, PostScript Type 2027

FAX OPTION

Compatibility	Group 3
Modem Speed	33.6 Kbps
Compression Method	MH, MR, MMR, JBIG (optional)
Scanning Speed	0.40 seconds (11" x 8.5")
Transmission Speed	3 seconds (2 seconds with JBIG)
Transmission/Reception	Up to 11" x 17"
Duplex	Reception (standard), Transmission (optional)
Standard Memory Capacity	4 MB SAF, 8 MB page memory (320 pages)
Maximum Memory Capacity	28 MB SAF, 16 MB page memory (2,240 pages)
Standard/Max. Resolution	Up to 200 x 200 dpi/Up to 400 x 400 dpi
Standard/Max. Auto Dials	500 Quick, 100 Groups/2,000 Quick Dials
Standard Features	Auto Document (6), Book Transmission, Dual Access, Duplex Reception, Image Rotation, 1 Hour Backup
Optional Features	Simultaneous Operation of up to 2 Lines (G3 x 2), LAN-Fax Capability, Fax Forwarding to E-Mail and Internet Faxing (T.37) with Network Scanning/Printing Installed
Fax Options	Function Upgrade Card/JBIG, 400 dpi/SAF, Second G3 line, Handset

OTHER OPTIONS

Auto Reversing Document Feeder DF75 – 50 originals
Platen Cover Type 1018
One Bin Tray PT280 – 125-sheet capacity
SR790 Finisher (1,000-sheet) Stapler (50-sheet staple capacity), 3 position
SR820 Finisher (500-sheet) Stapler (30-sheet staple capacity), 1 position
Internal Shift Tray Type 1027
PS500 Large Capacity Tray (2,000 sheets)
PS490 Paper Bank (2 x 500 sheets)
Bridge Unit Type 1027
User Acct. Enhance Unit (max. 500 User Codes)
FAC20 Cabinet
File Format Converter Type A
Scanner/Printer Kit Type 2027 (4022 & 4027)
HDD Type 2027
Key Counter Bracket

